



Heritage voyage on the historic mail boat MS Nordstjernen

Jubilee season



July 8th to 14th
2026

7 days / 6 nights

Voyage-No.
2026 – NOR – 60



Scandinavian Summer – Around Denmark including the Kiel-Canal

Be enchanted by the Scandinavian summer on this cruise with ports in three Scandinavian countries aboard the historic MS Nordstjernen. Additional, explore Helgoland with our tender boats and pass under the 10 bridges of the Kiel-Canal. The timeless atmosphere of the ship and the wooden-planked aft deck invite you to relax.



The Ship

- ★ Built in 1956 at the Blohm & Voss shipyard in Hamburg
- ★ Served on the iconic Norwegian Hurtigruten coastal route for 56 years
- ★ Small ship with 80 – 110 passengers.
- ★ Simple and small cabins. Good opportunity to remember that life was simpler 40 –50 years ago
- ★ Very cozy saloon deck and Teak planked outside decks
- ★ 2012 listed as a cultural heritage monument by the Norwegian Directorate for Cultural Heritage

**1956 – 2026
70 Years Nordstjernen**

On February 24, 1956, the Blohm & Voss shipyard in Hamburg handed over the MS Nordstjernen to BDS (Det Bergenske Dampskibsselskap). The Nordstjernen was transferred to Bergen and began service on the coastal express route along the Norwegian coast on March 1, 1956.



Heritage voyage on the historic mail boat MS Nordstjernen



MS Nordstjernen Travel Itinerary*

Day 1: Embarkation in Warnemünde

Your adventure begins in the picturesque port town of Warnemünde. The MS Nordstjernen awaits you in the idyllic harbor, surrounded by landmarks such as the historic lighthouse and the Teepott building with its distinctive curved architecture. Upon boarding in the afternoon, you'll immediately sense the unique atmosphere of a bygone era. Enjoy the departure from the Warnow river and prepare for the exciting days ahead.

Day 2: Malmö

The Nordstjernen reaches Malmö, the lively southern Swedish city directly opposite Copenhagen. The old town, with its colorful houses, charming streets, and historic buildings, tells of Malmö's rich history. Enjoy the Swedish summer with a walk along the harbor or explore modern architecture and green parks in the city center.

Day 3: Lillesand

Today the Nordstjernen reaches Norway and docks in Lillesand, an idyllic coastal town on the southern coast. The charming old town is characterized by white wooden houses, cozy streets, and a lively small harbor. Take a walk along the waterfront promenade or explore the surrounding archipelago with its picturesque coves.

Day 4: Esbjerg

After a cruise across the North Sea along Denmark's west coast, we reach Esbjerg, a city with a maritime tradition and a modern harbor. The impressive sculptures "Mennesket ved Havet" (The Men at Sea) greet you – four giant figures looking out to the sea. Join our optional excursion to the island of Fanø with its long sandy beaches and the picturesque village of Sønderhø, considered Denmark's most beautiful village!

Day 5: Helgoland

The Nordstjernen anchors off the German North Sea island of Helgoland, which we reach with our agile tender boats. The colorful lobster huts invite you to stay. On a walk over the Oberland, enjoy the view over the open sea and the bathing island "Düne". It is possible to visit Düne, with its sandy beaches and seal colonies, by a small ferry.



Day 6: Passage through the Kiel Canal

A highlight of this voyage is the passage through the impressive Kiel Canal, one of the world's busiest artificial waterways. As the ship glides calmly through the landscape, green shores, small villages, and 10 impressive bridges pass by. Experience the 99 kilometers between the locks in Brunsbüttel and Kiel and watch the pilot change halfway. On the aft deck or in the salon, there is time to relax.

Day 7: Disembarkation in Warnemünde

In the morning, your nostalgic journey on board the MS Nordstjernen ends in Warnemünde. Enjoy the final hours on board, take in the relaxed atmosphere, and reflect on the memories of the past days.





Heritage voyage on the historic mail boat MS Nordstjernen

Itinerary*

Date	Port	Time in port
08.07.2026	Warnemünde	Check-in ca. 17.00
09.07.2026	Malmö	Morning - Afternoon
10.07.2026	Lillesand	Afternoon
11.07.2026	Esbjerg	Morning - Evening
12.07.2026	Helgoland	Full day
13.07.2026	Nord-Ostsee-Kanal	Morning - Evening
14.07.2026	Warnemünde	Arrival ca. 9.00

*carefully planned. Changes in ports and route are possible, e.g. due to weather conditions, technical challenges or unforeseeable events. **There is no claim to the itinerary described.**

Dining onboard

The meals on board are always freshly prepared using high-quality ingredients.

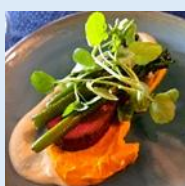
A varied breakfast buffet is served in the morning.



At lunchtime, guests can enjoy a hot and cold buffet with a wide variety of delicious dishes, or a lunch package if desired.



In the evening, a selected three-course menu is served at the table.



Upon request, vegetarian, vegan, gluten-free, or individually tailored meals are available.

Shore excursions

In the ports, we offer exciting shore excursions in cooperation with local partners. Normally the excursions are not included in the price of the trip.

Our shore excursions are varied and provide insights into the unique features of the region and the lives of the local people. **The program for the shore excursions is available about four weeks before the start of the trip.**

Our shore excursions include, for example, trips on historic ships or trains, coastal hikes, bus tours to special attractions in the region, guided city walks, or museum visits.



How to find the port

Travelling to the embarkation port and from the disembarkation port has to be arranged individually.

Warnemünde

The berth of MS Nordstjernen is **easy to reach**:

Train: About a 10-minute walk from Warnemünde station. Convenient rail connections from Hamburg and Berlin. Tickets available at [db.de](https://www.db.de).

Car: Hamburg – Warnemünde approx. 200 km, about 2.5 hours' drive. Parking available near the harbor for a fee.

Flight: The nearest airports are Hamburg and Berlin-Brandenburg, with onward travel by train to Warnemünde.

Ferry: Direct connections from Gedser (Denmark) and Trelleborg (Sweden) to Rostock-Warnemünde.



Heritage voyage on the historic mail boat MS Nordstjernen



Prices Voyage-No. 2026 – NOR – 60

What is included: voyage from embarkation port to disembarkation port in booked cabin category, full board (without drinks) incl. breakfast, lunch and dinner, free filter coffee, tea and tap water, passage and passenger taxes, onboard tour leader (English speaking, possibly additional languages)

Onboard language: English

Minimum number of passengers for this voyage: 50

Cabin category	Deck	Price per person, single occupancy of cabin in €	Price per person, double occupancy of cabin in €
Cat. E: Very small inside cabin with bunk beds (shared facilities)	A, B	1.410	975
Cat. D: Outside cabin with bunk beds (shared facilities)	B	2.025	1.495
Cat. I: Inside cabin with bunk beds, ensuite shower/toilet	B, C	2.270	1.680
Cat. A: Outside cabin with bunk beds, ensuite shower/toilet	B, C	2.545	1.885
Cat. N: Larger outside cabin with bunk beds and sofa (cabin 304: two lower beds), ensuite shower/toilet	C	-	2.450

Prices for three or four bed – cabins as well as discounts for children on request.

Cabin Categories and Cabin standard

Please read the information about [cabin standard](#) and [cabin categories](#) carefully before booking.

General information about the ship

As there are some specifics due to the age and heritage stand of the ship, we ask you to read the [general information](#) about the ship carefully before booking.

General terms and conditions

You find the [General Terms and Conditions](#) published on www.vestlandclassic.com

Buchung über:

**Internationale Frachtschiffreisen
Pfeiffer GmbH**

Manteuffelstr. 6
42329 Wuppertal

Tel.: +49 (0)202 452379
Fax: +49 (0)202 453909

mail@frachtschiffreisen-pfeiffer.de
www.frachtschiffreisen-pfeiffer.de

